

## FORESTRY MULCHERS FOR SPECIAL VEHICLES

# 500/U/SONIC/PT550

Forestry mulcher with Sonic technology.

The 500/U/SONIC/PT550 forestry mulcher is the top of the line for special vehicles, capable of mulching logs up to 20 in in diameter.



Sistema Sonic



Ø 20 in max



Guard frame hydraulic control (optional)

Hydraulically controlled hood to adjust final product

Possibility to have optional rotors and tooth

Adjustable skids

| MODEL                       | 500/U/SONIC/PT550-225 | 500/U/SONIC/PT550-250 |
|-----------------------------|-----------------------|-----------------------|
| Head type                   | Mulcher               | Mulcher               |
| Working width (in)          | 91                    | 101                   |
| Total width (in)            | 113                   | 122                   |
| Weight (lbs)                | 10400                 | 10950                 |
| Rotor diameter (in)         | 27                    | 27                    |
| Max shredding diameter (in) | 20                    | 20                    |
| No. teeth type A/3+MH/3     | 88+2                  | 96+2                  |
| type C/3+C/3/SS             | 54+2                  | 60+2                  |

Data refers to machine as standard. The technical data in this catalogue may be altered without prior notice.

### ROTOR TYPE A



TOOTH A/3  
(standard)



TOOTH A/3/HD  
(option)



TOOTH MH/3/3  
(side scraper)

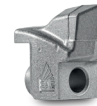
### ROTOR TYPE C



TOOTH C/3  
(standard)



TOOTH C/3/HD  
(option)



TOOTH K/3  
(option)



TOOTH C/3/SS  
(L/R)  
(side scraper)