

REMOTE CONTROLLED DEMINING MACHINE

ATTACHMENTS



MODEL	300/TD/PT300 DM-250	300/FD/PT300 DM-250
Head type	Demining Tiller	Demining Flail
Working width (in)	98	98
Total width (in)	123	126
Weight (lbs)	8400	6950
Rotor diameter (in)	35	38
No. teeth type	C/3+STC/3/FP+BAZ	-
No. flails	-	36

MODEL	200/U/SONIC/PT300-200	200/U/SONIC/PT300-210	200/U/SONIC/PT300-225
Head type	Forestry Mulcher	Forestry Mulcher	Forestry Mulcher
Working width (in)	81	85	91
Total width (in)	97	101	107
Weight (lbs)	5450	5600	5900
Rotor diameter (in)	20	20	20
Max shredding diameter (in)	14	14	14
No. teeth type	C/3+C/3/SS	44+2	46+2

MODEL	200/S/PT300-200	200/S/PT300-225	300/SC/PT300
Head type	Forestry Tiller	Forestry Tiller	Stump Cutter
Working width (in)	82	91	57
Total width (in)	95	105	41
Weight (lbs)	6500	6980	4650
Rotor diameter (in)	23	23	40
Max working depth (in)	12	12	40
Max shredding diameter (in)	12	12	20
No. teeth type	B/3+C/3/SS	82+4	-
	M/1+M/2+M/3+M/4	-	24+4+24+4

MODEL	DOZER BLADE PT300-240
Blade width (in)	95
Moldboard height (in)	38
Blade angle	± 15°
Blade tilt	± 10°
Weight (lbs)	3100

Data refers to machine as standard set-up. Options may have reflects on weights and dimensions. The technical data in this catalogue may be altered without prior notice.

DP-053007 USA - 07/2024 - by FAE GROUP S.p.A.

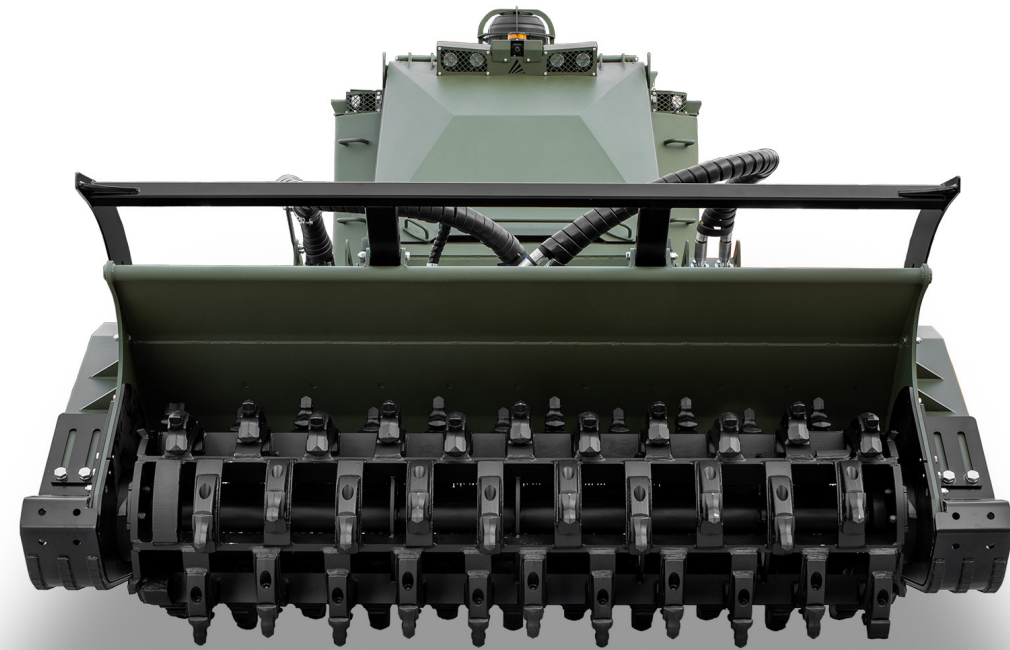


DEMINING Remote Controlled Demining Machine



DEMINEING VEHICLE

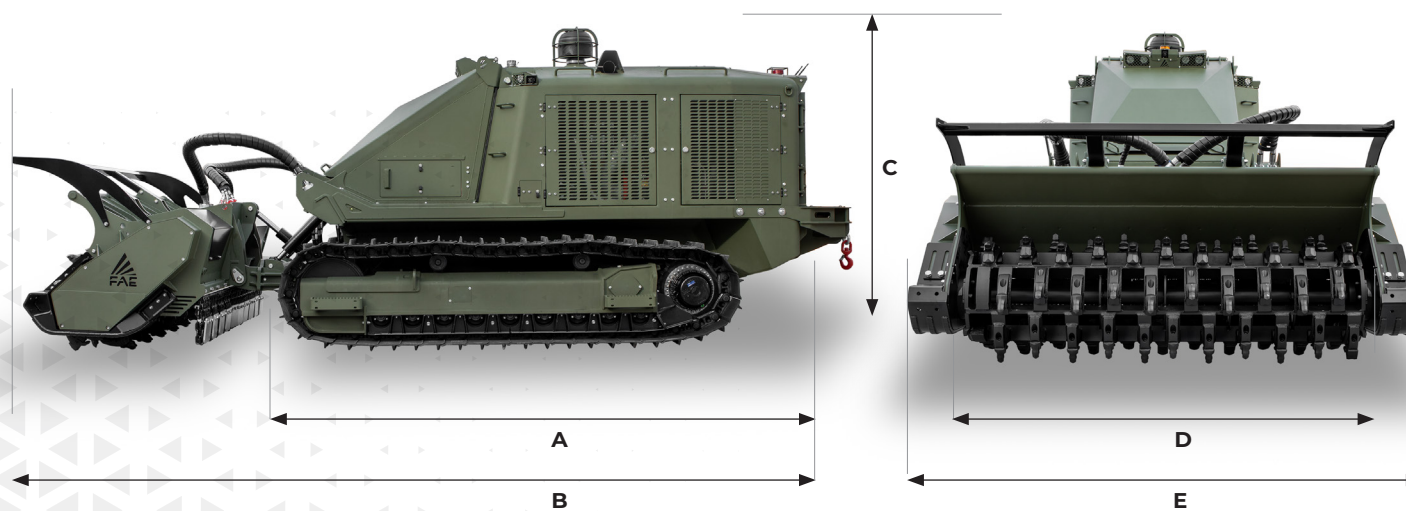
Roads, paths, agricultural areas, and forested areas that have been planted with land mines: the FAE Demining line is aimed at NGOs, armed forces and other demining operators that work to reclaim dangerous areas for civil use. The PT300 D:MINE is a middle class demining machine certified with the demining tiller 300/TD/PT300 and with a demining flail 300/FD/PT300 DM according to the T&E Protocol Machines (30/06/2009), CWA/15044:2009 and HRN 1142:2009 to clear anti-personnel-mines (AP) and antitank-mines (AT).



APPLICATIONS:

- Mechanical clearance tasks with hazardous areas containing anti-personnel and anti-tank mines.
- Ground preparation for manual demining.
- Technical survey tasks.
- Vegetation clearance for BAC (Battle area clearance operations) to allow the detection and disposal of unexploded ordnances (UXO)

DIMENSION



A Overall length without demining head 195 in
B Transport length with 300/TD/PT300 DM attachment on ground 255 in

C Max height 107 in
D Overall tracks width 93 in (26 pads)
E See attachments table

REMOTE CONTROLLED TRACKED CARRIERS

PT300 D:MINE

Demining vehicle.

The PT300 D:MINE mechanical demining asset is operated via remote control from a significant distance for the safety of the operator. It works in the toughest conditions, including rough terrain, steep slopes up to 45°, swampy land, and areas with dense vegetation. Some of its main technical features include a super sturdy structure with an oscillating undercarriage, large track pads for optimum

mobility, the high-performing CAT C7.1 Acert engine, and a lower operating weight. The ergonomic remote control makes it possible to safely perform all functions. The carrier can also be equipped with other types of FAE attachments like forestry mulchers, tillers, stump cutters, or dozer blades.

MULTI-TASKING

There are several attachments available including the fixed-tooth demining tiller, the demining flail head with chains and hammers, the vegetation cutter (mulchers with the exclusive Sonic technology) and the dozer blade.



SAFE

The ergonomic remote control with a large 3.5" display makes it possible to safely manage all vehicle and head functions. The transmission frequency at 2.4 GHz ensures optimal connection at a safe distance.

TECHNOLOGICAL

The PT300 D:MINE's electronically managed hydrostatic transmission is the perfect solution for optimal power transmission and long-term reliability. Innovative functions like Load Control and Floating ensure high efficiency in any condition. The I/R day and night vision system allows to operate it at a safety distance with the assistance of 360° video images with cameras in the front, rear, left and right sides.

POWERFUL

It has the flexibility and reliability of one of the world's most widely used six-cylinder engines. The Caterpillar C7.1 Tier 4 Final/Stage V engine delivers 302 hp, and 275 hp with the Tier 3/Stage III version. It offers superior performance and a global support network.

SOLID

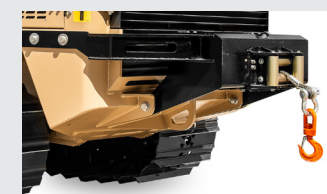
The frame was built to withstand extreme stress. The undercarriage was designed for maximum performance. The technology of the oscillating undercarriage provides better impact absorption and manoeuvrability.

Remote Controller

up to 1000 m in open field.



MAIN OPTIONS



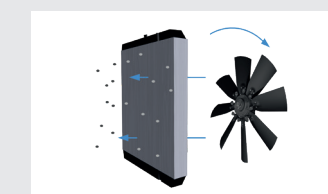
Rear winch with 6 t pulling power



360° I/R view cameras system



Operator cabin for non demining operations



Proportional and reversible radiator fan



302 hp
 CAT ENGINE
 TIER 4 FINAL / STAGE V



OPTIONS

Rear winch - rated towing capacity: 6t	Service light (service package)
Chain guides	Oil top-off pump (service package)
Rock guards	Cab (full optional)
Proportional and reversible radiator fan	Custom color
Pre-heating system for engine and hydraulic oil	Additional rubber pads
View cameras system	

TECHNICAL DATA

PT-300 D:MINE TIER 4F / STAGE V

Engine Gross Power	302 hp
Engine Emission	U.S. EPA Tier 4 Final / EU Stage V
Fuel Consumption	31 to 42 L/h (11 to 8,1 working hours)
Travel Pumps	2 - EP control - 78 cc - Danfoss
Travel Motors	2 - HY control - 80 cc - Danfoss
Max Travel Pressure	6000 psi
Attachment Pump	1 - EP control - 147 cc - Danfoss
Max Mulcher Pressure	5080 psi
Hydraulic Oil Tank Capacity	85 gal
Fuel Tank Capacity	90 gal
DEF AdBlue® Tank	4.2 gal
Track Chain	171 Pitch - Lubricated - Berco
Lower Rollers	6 + 6 Single Flange + 3 + 3 Double Flange
Carrier Rollers	2 + 2
Voltage	24 volt
Max forward speed	4 mph
Max reverse speed	4 mph
Gradeability	45° vertical, 35° lateral
Operating weight	24450 lbs (std equipment, 26 in pads SG)
Ground Pressure	5 psi (std equipment / 26 in pads SG / 300/TD-250 Rotor G/3)

Data refers to machine as standard set-up. Options may have reflects on weights and dimensions. The technical data in this catalogue may be altered without prior notice.