

FORESTRY MULCHERS FOR SPECIAL VEHICLES

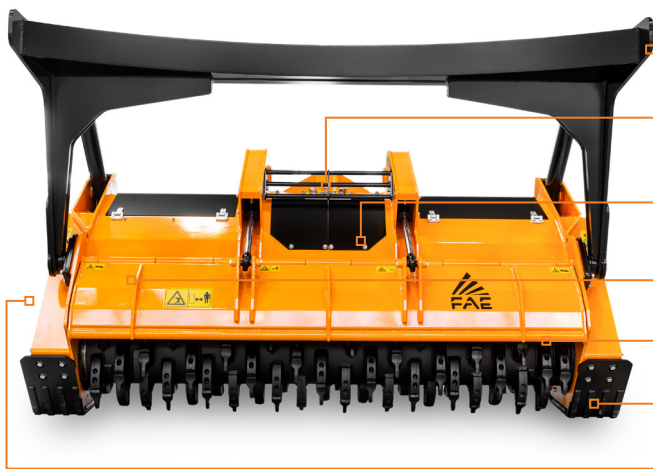
500/U

Heavy duty hydraulic mulcher.

The 500/U forestry mulcher is the top of the line for special vehicles, capable of mulching logs up to 20 in in diameter. The transmission is rated for use up to 600 hp, so it can work with the most powerful vehicles on the market.



Ø 20 in max



Mechanical or hydraulic push frame (optional)

Customized attachment plates

Hydraulically controlled hood to adjust final product

Ripper teeth on hydraulic hood (optional)

Multiple tooth options

Adjustable skids

Customized hydraulic transmission

MODEL	500/U 225	500/U 250
Head type	Mulcher	Mulcher
Working width (in)	91	101
Total width (in)	113	122
Weight (lbs)	10400	10950
Rotor diameter (in)	27	27
Max shredding diameter (in)	20	20
No. teeth type A/3+MH	88+2	96+2
type C/3+C/3/SS	54+2	60+2

Data refers to machine as standard. The technical data in this catalogue may be altered without prior notice.

ROTOR TYPE A



TOOTH A/3 (standard)



TOOTH A/3/HD (option)



TOOTH MH (side scraper)

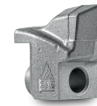
ROTOR TYPE C



TOOTH C/3 (standard)



TOOTH C/3/HD (option)



TOOTH K/3 (option)



TOOTH C/3/SS (L/R) (side scraper)